

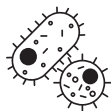
# OCCUPATIONAL HEALTH Q FEVER EDUCATION



Environmental Health and Safety  
UNIVERSITY OF COLORADO  
DENVER | ANSCHUTZ MEDICAL CAMPUS

The following is an overview of Q Fever information for researchers working in the Perinatal Research Facility. Contact [occupational.health@cuanschutz.edu](mailto:occupational.health@cuanschutz.edu) if you have any questions.

## WHAT IS Q FEVER?



- Q Fever is zoonotic rickettsial disease caused by the bacterium *Coxiella burnetii*
  - *C. burnetii* can reach high concentrations in animal tissues, especially placenta and other products of conception
  - *C. burnetii* is most commonly associated with sheep, but other animals can be carriers.
  - **Acute**
    - 5 out of 10 people infected with *C. burnetii* will get sick
    - Illness develops 2 to 3 weeks after exposure to the bacteria
  - **Chronic**
    - Develops months or years following initial Q fever infection
    - Can be deadly if not treated
    - Risk factors: heart valve disease, blood vessel abnormalities, weakened immune system, pregnancy
- **Transmission** to humans occurs by:
  - Airborne dissemination of *C. burnetii* through direct contact with infected animals
  - Ingesting contaminated food or breathing in dust that has been contaminated by infected animal feces, urine, milk, and birth products that contain *C. burnetii*
- **Signs and symptoms of Q Fever**
  - High fever
  - Sore throat
  - Chills, sweats
  - Non-productive cough
  - Muscle pain
  - Body discomfort
  - Fatigue
  - Severe headache

## IN THE EVENT OF AN EXPOSURE/SYMPTOMS



- When working around sheep areas, it is important to remain vigilant with a high index of suspicion on potential signs and symptoms of Q fever.
- Report any symptoms to Occupational Health
  - **(303) 724-9145**
- Schedule an appointment with Occupational Health
  - Consult and possible blood draw

## SURVEILLANCE REQUIREMENTS



- Initial Surveillance:
  - Submit Initial Medical Surveillance Questionnaire
  - Make appointment with Occupational Health for initial blood draw to establish baseline serology
  - PPE education and training
  - N95 fit testing
- Annual Surveillance:
  - Submit Annual Medical Surveillance Questionnaire
  - Annual blood draw
  - PPE education and training
  - N95 fit testing
- When exiting the program
  - Exit Q Fever titer one year after last entry into PRF

## BUILDING INFORMATION



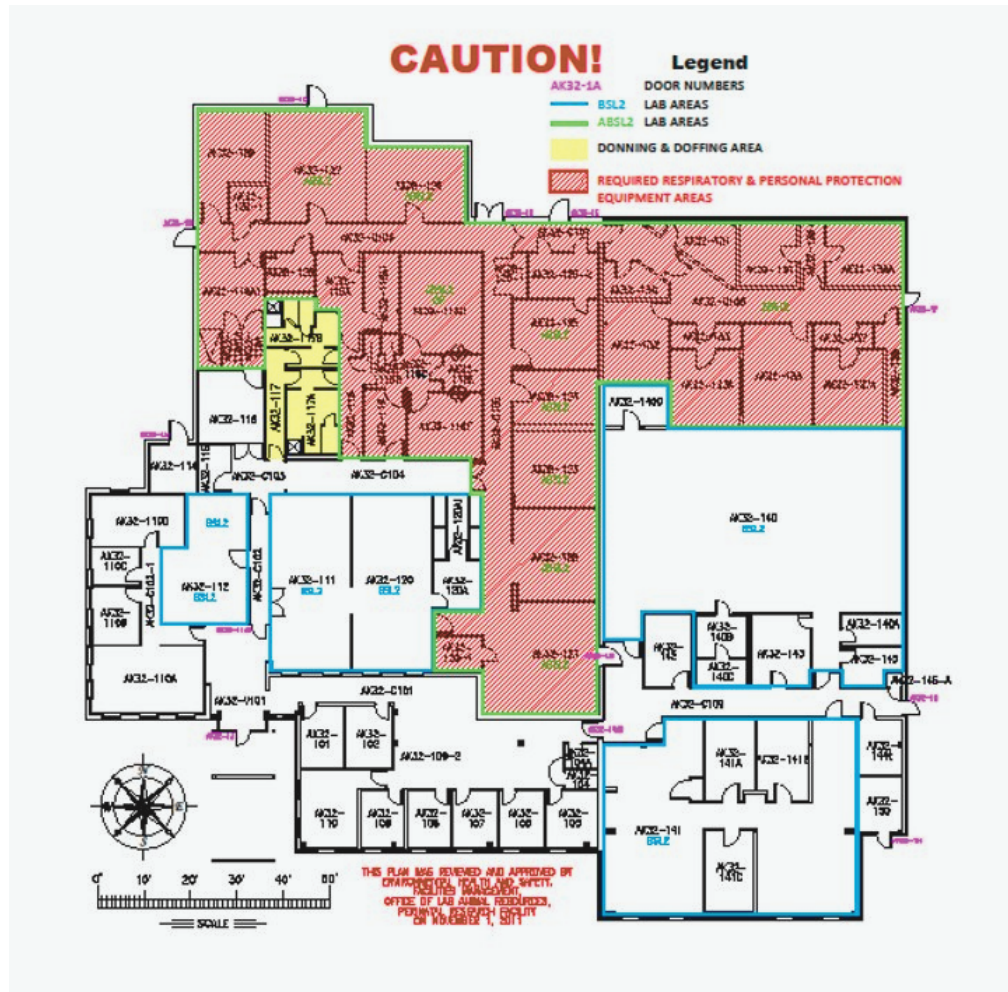
- Facility access is controlled via electronic badging
- **Only one approved entry & exit point**
  - Entry and exit from the rear door or any other entryways are forbidden
- Rear door access is limited to a few PRC and Facility staff for the purposes of delivery or maintenance activities

## PPE AND PRECAUTIONS



- Traffic patterns marked by signage and donning/doffing locations must be adhered to
- Adherence to BSL-3 practices is essential during necropsy and birthing
- **Required PPE:**
  - Respiratory protection
  - Eye protection
  - Disposable gowns
  - Gloves

Perinatal  
Research  
Facility Map



occupational.health@cuanschutz.edu



<https://research.cuanschutz.edu/ehs/home/divisions/occupational-health>



(303) 724-9145

